



# *MultiBaler XL*







Best compaction  
*Extremely durable*  
Options  
Silage  
Impress  
MultiBaler  
Modern  
Best allrounder  
Deployable  
Happiness  
Industrial use  
Connected  
Mobile use  
Challenges  
Forage  
Stationary use  
Baling & Wrapping  
Highest yield

*Even cows become curious!*



Quality for green fields all over the world.



# Introducing the **KNOLL MultiBaler XL**

The KNOLL MultiBaler XL is multi-functionally deployable because of his robust construction. This multi-functionality makes the machine the best allrounder of its kind. KNOLL MultiBalers are working worldwide to provide the best quality round bales and highest performance.

**With KNOLL on its way to quality forage!**

## The development

In addition to the existing KNOLL MultiBalers (820/1220), the KNOLL MultiBaler XL is a completely new development. We have once again moved to the drawing board and developed a machine that is unique.

Continuing on both the stationary and mobile use, this MultiBaler XL gives the opportunity to process a variety of materials in round bales.

Key feedback from you, the customer, underlined the need for comfort, ease of use, value for money, excellent reliability, intuitive and convenient controls, 100% connectivity, and the ability to work with the most demanding implements.

This is characterized by straightforward technique as the most dependable machine of its kind!

The result:  
"a KNOLL MultiBaler  
for a new era"



## We keep you moving forward...

We have noticed that the development and demand for processing chopped or shredded materials in well-compacted round bales is increasing.

Adding value is more than just making a good machine. Our starting point is always: "what means valuable to our users?"

The KNOLL MultiBaler XL is a new machine that makes work for the customer more pleasant, faster, better, and more reliable. It gives more possibilities, and in our view, that is what we can use to help you move forward, our motivation to keep developing!



## Best quality feed for your livestock

With the KNOLL MultiBaler XL, Knoll Baling & Wrapping offers a unique machine and total solution that can be used in a very economical way. Depending on the type of material and structure, different kind of materials can be compacted from 30% to 70%.

Every machine owner or customer you work for desires to process the best quality feed. The highest quality silage can be guaranteed by processing it in bales.

Quality depends on many factors, but high compaction and the exclusion of oxygen in combination with the best processing capacity makes the KNOLL MultiBaler XL the right partner in this process.





# Unique and versatile, the most efficient in its kind!

The KNOLL MultiBaler XL is unique. The only machine that can work both stationary and mobile. There is no need to change the work mode of the machine. Very simple and you can start working right away.

This feature provides versatility and more possibilities to use the machine effectively, with a better result in the end..... and happy users!



## Mobile use

The MultiBaler XL distinguishes itself from any other machine on the market because it offers the possibility to use the machine directly in the field.

This simplifies use and often saves 1 to 2 extra work passes that are required for stationary use. The crop is processed into a bale immediately after chopping, which guarantees the very best end product.

## Stationary use

The MultiBaler XL is equipped with a large bunker at the front of the machine. This bunker can be easily loaded from above using various machines.

With a capacity of 8.00 m<sup>3</sup>, this bunker is the ideal way to process a variety of materials, both for agricultural and industrial applications.



### Loading with any kind of loading equipment

The spacious infeed bunker can be loaded with any type of machine.

E.g. a tractor with a front loader, wheel loader, crane or any other loading solution.

The bunker is equipped with side panels that can be folded down to facilitate loading.



### Using the Dropbunker V60120 for loading

When loading directly from a silage wagon, the "Dropbunker V60120" offers the solution for the demanding user.

This loading bunker (3.50 m<sup>3</sup>) is hydraulically driven and the feed speed can be perfectly adjusted for any type of material by means of a throttle valve.



### Unique combination!

The KNOLL MultiBaler XL can be used mobile very efficiently:

1. Direct in combination with the chopper (pto-driven)
2. Driving next to the chopper, pulled by a tractor
3. In combination with a tractor equipped with a chopper at the front



### Various types of grass can also be processed directly in the field.

The KNOLL MultiBaler XL answers a frequently asked question. Is it possible to process chopped grass into bales? YES!

The MultiBaler XL was developed on the basis of the idea that it should be possible to process various chopped/shredded materials into bales.

A variety of materials can be baled, for example grass, alfalfa, herbal mixtures, hemp, crimped grain, GPS etc.



# How the MultiBaler XL works

## 1 Loading and infeeding of the material

Loose material can be loaded from the top into the bunker with a (wheel) loader or crane. The bunker has a **volume of 8,00m<sup>3</sup>**.

After loading the bunker, materials are automatically fed into the bale chamber.

An **automatic speed regulation** of the bottom feed chain always ensures the most optimal feed of the material. In addition, the MultiBaler XL is equipped with a **dosing roller** that ensures optimal material distribution on the feed conveyor.

The **sloping infeeding conveyor** ensures efficient filling of the bale chamber from the top. It is also equipped with a **special feed roller** to optimize the crop flow (also for long materials).

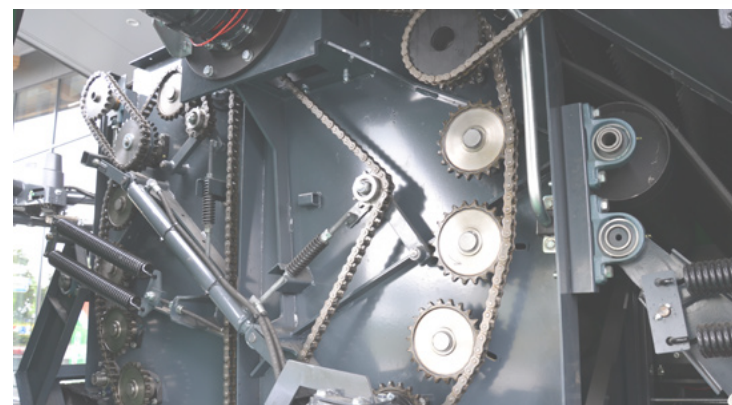


## 2 High-density baling

The bale chamber of the KNOLL MultiBaler XL has been developed based on many years of application in the industrial environment. This has resulted in the best bale chamber of its kind with a guaranteed long life and minimal wear.

The MultiBaler XL is equipped with an **adjustable hydraulic pressure system** to set this according to the material that is being processed.

The baler is equipped with **17 bale chamber rollers** in combination with **two "Power-Grip 4" chamber belts** to limit losses.

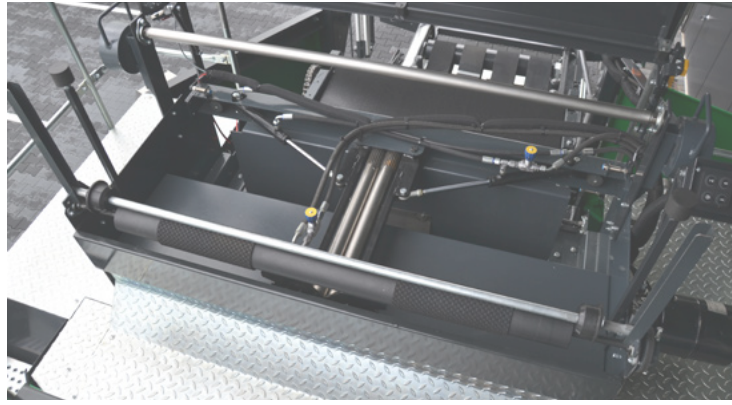


## 3 Film- / net tying unit

The MultiBaler XL is equipped with a patented tying unit. The operator decides whether using the **mantelfilm or net**.

The film & film system is based on layers of mantelfilm which are tied around the bale surface in the bale chamber to ensure the highest bale density and best bale shape.

This system is equipped with **external controls** to make net- or film roller replacement extremely easy and to make it possible to quickly resume the machine automatically on the loading platform.



## 4 Intergrated return system

Material losses are being reduced till minimum through a return system **underneath the entire length** of the MultiBaler XL.

Small crumb losses are recycled by a continuously rotating return conveyor. At the front of the return system, the material is being returned by **short horizontal augers** (also for long materials) to the sloping infeeding conveyor for the most efficient processing.



## 5 Wrapping with automatic film control

The **wrapping table** moves forward and backward through a guide rail. From the bale chamber position, the bale is quickly transported to the wrapping position.

The wrapper is equipped with **two 750 mm. film stretchunits**. For optimal control, this system is equipped with **automatic film break detection**. As soon as a roll of film is empty or when the wrapping film tears, the speed is automatically reduced to ensure that the overlap remains 50% at all times.

The carefully developed **film cutters** always ensure accurate cutting and holding of the film.





# Basic features of the KNOLL MultiBaler XL

An owner of an KNOLL MultiBaler XL is served to his needs. He has a machine that is basically equipped with everything needed to achieve the highest quality!

The composition consisting of the best quality components and our dedication during development has made this machine unbeatable!



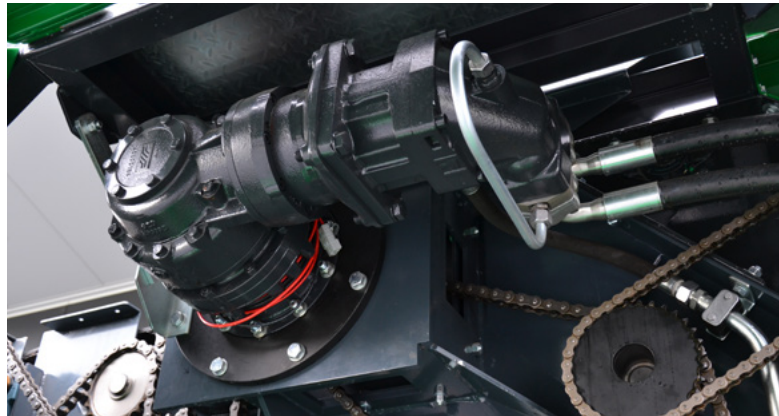
Reliable operating system that guarantees the best machine performance

The machine's control system is carefully composed of the best available electrical, hydraulic and mechanical components. This, in combination with an in-house developed operating system, ensures optimal cooperation, resulting in a very strong and user-friendly composition!



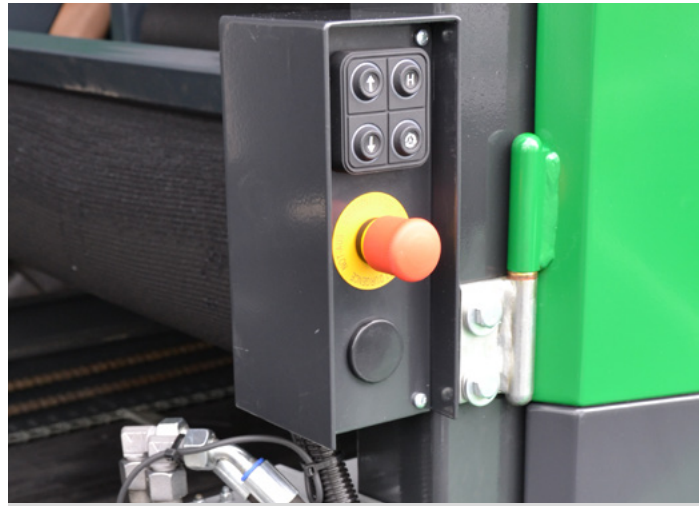
## Basic specification of the machine

Double wrapper arm with 750 mm. film	Tandem chassis with flotation tyres 560/60 R22.5
Automatic film break detection system	Air brake system (two-line) for max. 60 km/h
Automatic adjustment of the wrapping speed for one roll	Rimote® system for wireless connection of the machine for service and operation
Patented binding system for mantelfilm or net	Integrated camera system with two camera's
Bale chamber with 17 chamber rolls equipped with long-lasting slide bearings	Integrated LED-light system equipped with 4 work lights
Patented Power-Grip-4 bale chamber belts (2 pieces)	Automatic central lubrication system for oil and grease for all bearings and drive chains
Return system for recycling of crumb losses	External keypads for quick operating of functions
Hydraulic baling pressure control system	IQAN 10" TFT touchscreen operating console
Proportional hydraulic movable wrapper table	12 reels additional wrapping film storage
On board Danfoss hydraulic system (load-sensing)	5 reels additional mantelfilm/net storage
Air-cooled oil cooling system with reverse fan	Special feed rotor for optimal control of crop flow



Hydraulic bale chamber drive system

Hydraulic bale chamber drive. Durable solution, speed can be adapted to various types of material.



External controls for important machine functions

By means of 3 keypads it is possible to operate important functions for wrapper and film binding directly. For example, the film(s) can be easily replaced and the machine can easily be restarted.



IQAN 10" TFT operator console

The MultiBaler XL has a 10" colour touch screen monitor, which provides clear indicators of machine performance and allows for increased levels of monitoring, through its large graphic display.

By means of Rimote®, the machine is always "connected" and can be accessed from anywhere for data exchange.



Automatic oiling & greasing

The machine is fitted with a LINCOLN automatic oiling & greasing system as standard. This pump system delivers a measured amount of oil and grease around the machine after a preset cycle. An automatic system saves time as it reduces the amount of manual greasing to be done by the operator.



# Additional options for the machine

The KNOLL MultiBaler XL is being used in different conditions around the world. Its versatility makes the machine popular with a variety of users.

To optimize the machine performance, we offer a number of options so that the machine can be used exactly according to the user's specifications.

## Bale weighing system



If the machine is fitted with the optional bale weighing systems, these readings will be displayed on the IQAN-screen.

The bale weighing system record the weight of each bale and their average bale weight reading for the job is displayed in the individual customer profile section on the control console.

## PDH-10 additive dosing system



The fully automatic PDH-10 system ensures the best quality silage. Developed in-house and equipped with a stainless steel pump. Any kind of additive can be applied automatically. Operation integrated in the software of the machine.

## Side loading conveyor

The MultiBaler XL equipped with the optional side loading conveyor makes it possible to set up the machine for various activities. This allows, for example, a dosing wagon or mixer wagon to be emptied directly without the intervention of any other equipment. Fast, efficient and effective!

This system is hydraulically driven with corresponding speed control to adapt it to any type of material.

## Remote control - bale unloading

With the optional remote control, the operator is always "in control".

By simply pressing the button, it determines when the bale will be unloaded.

This handy device can easily be taken along with the machine during work wherever the operator moves.



## Low profile "dropbunker"



Whether you want to load the KNOLL MultiBaler XL by using a dumper, push-off trailer, truck, or direct loading of the low profile dropbunker is the right solution.

The low profile bunker with a width of 3,00mtr is hydraulically operated. Also the height of the bunker can be adjusted hydraulically. The chassis with wheels 10.0/75-15.3 ensures that this dropbunker can easily be transported.



# Any kind of material can be baled!

You will be amazed by the possibilities that the KNOLL MultiBaler XL offers you!

Any type of material can be processed, from agricultural crops to industrial processing of waste products, we are happy to accept the challenge!



Maize / Corn



Chopped grass



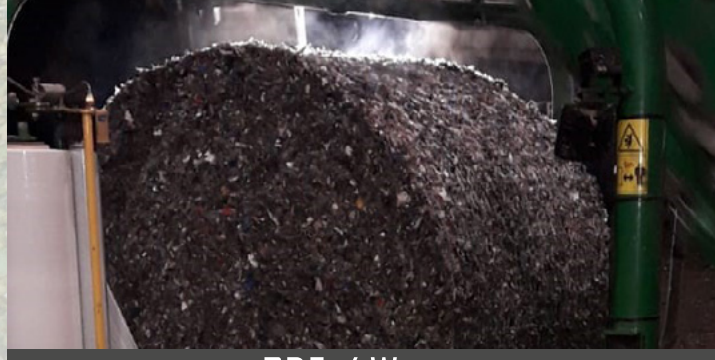
GPS



TMR (Total Mixed Ration)



Corn Cob Meal



RDF / Waste

## Examples of other materials that can be baled with the KNOLL MultiBaler XL...

Transforming bulk material and other fine particle materials into round bales with high-density is where the KNOLL MultiBaler XL excels!

Our customers use our MultiBalers to bale a wide range of different materials.

Alfalfa / Lucerne	Dry manure
Crimped grain	Saw dust
Sugar beet pulp	Peat
Hemp	Cotton



# Worldwide service network and experienced users

Even the best machines cannot do without service! KNOLL MultiBalers are working in more than 40 countries and our service team is available for all customers, 24 hours a day - 7 days a week. Our customers can rely on our commitment, so they can expect the maximum performance from their machine.

- Information:** Machines are provided with expertly compiled user manuals and parts information.
- Service:** High-quality original spare parts. Everything in stock, fast delivery.
- 24/7:** We are available 24/7 to help you with various communication tools.

## User experiences from the field



**Werner Hofmänner - Contractor from Switzerland**

"The MultiBaler XL runs flawlessly and the employees are enthusiastic!"

**About Hofmanner Haag AG - Haag (Rheintal) Switzerland**  
 Hofmänner Haag AG is a family-owned contracting company that carries out work for clients in a wide area in Switzerland at the border of Liechtenstein.

**What is your experience with the MultiBaler XL?**  
 The KNOLL MultiBaler XL is a robust machine. It has a strong and durable developed bale chamber, resulting in very well compacted bales. The film binding is working in an uncomplicated way and works magnificently for all kinds of materials.

Due to the very well optimized control of the complete machine, the MultiBaler XL also achieves a good hourly output.

**What made you decide to start working with an KNOLL MultiBaler XL?**  
 Loading of the bunker with the optional "side loading conveyor" was of great importance to us, so we can unload quickly with our dosing trailer with side discharge system so we never have to drive back. Next to this, setting up the machine is easy and hardly noticeable in terms of the time required.

**What kind of materials are you baling with the machine?**  
 We mainly bale maize, corn cob meal, some sugar beet pulp. Our idea is to also bale GPS and possibly grass silage. But from our experience you can bale anything with this machine.



# Technical details

The KNOLL MultiBaler XL can be used stationary or mobile after arrival at the workplace to get started immediately.

The figure and overview below provide information on all the technical details of the machine and the power and connections required to operate the machine.

## Work mode (mm)



## Transport mode (mm)



MACHINE DATA	Work mode	Transport mode	SPECIFICATIONS	KNOLL MultiBaler XL
Length (mm)	12.290 mm	11.373 mm	Bale size	100-115cm (Ø) x 120cm (width)
Width (kgs)	2.972 mm		Bale volume	1.25m <sup>3</sup>
Height (mm)	3.859 mm		Bale weight	500-1350 kg *
Weight (kgs)	10.640 kg *		Bales per hour	Approx. 60 bales/hour **
Wheel size	560/60 R22.5		Drive system	Proportional hydraulics
Brake system	Air brake system (two-line) for max. 60 km/h		Operator system	IQAN 10" TFT touchscreen console (dust/water resistance)
Power required	Min. 100 kW / 135 hp		Connections	12V DC & road light system
PTO	1-3/8" - 1000 RPM		Binding system	Mantelfilm or net

\* Standard machine without options

\* Depending on the type of material and condition  
 \*\* Depending on the type of material and machine settings





**Knoll B.V.**  
Staphorst, Holland



***"KNOLL & AGRONIC  
moving forward together,  
success takes care of itself"***

A strong partnership for more than 25 years brings out the best in us.

Successful together in the development of durable and reliable machines that create added value for our customers!

Great cooperation creates great machines for satisfied customers!



**Agronic Oy**  
Häapavesi, Finland




## CONTACT



### Sales office:

Knoll - Baling & Wrapping  
Achthoevenweg 40  
7951 SK STAPHORST  
NETHERLANDS

### Contact details:

 (+31) 0522 - 29 13 77

 [info@knollbv.nl](mailto:info@knollbv.nl)

 [www.knollbv.nl](http://www.knollbv.nl)

You also find us on:



Your **KNOLL** quality partner:



Knoll - Baling & Wrapping  
is part of Knoll B.V.

